



**1914 View of Methodist Episcopal (M.E.) Church (1882-1995)  
Northeast Corner of Indiana & Harrison Sts., Mooresville, Indiana**

The Methodist Episcopal (M.E.) Church was built in 1882 and was used until 1995 by the United Methodists. Since 2006 the site has been used as the Mooresville Town Government Center. Local photographers J.P. Calvert & Manly Brown climbed atop the steeple to take aerial pictures of the town. *(Photo by J. P. Calvert.)*



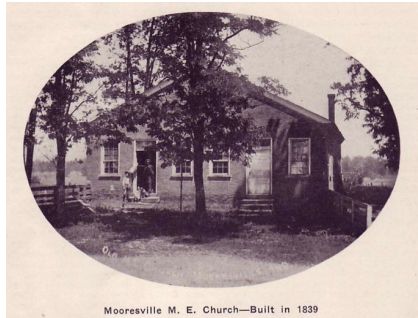
MRS. ELIZA WORTHINGTON MOORE  
Founder of Mooresville Methodist Church.

Eliza Worthington Moore (Samuel Moore's wife) held the town's first Methodist class in 1828 and founded the M.E. Church in 1839.

Published by Mooresville Public Library  
220 West Harrison Street  
Mooresville, IN 46158  
[www.mooresvillelib.org](http://www.mooresvillelib.org)

Copyright © 2009 by Mooresville Public Library. All Rights Reserved.

## Flash From Your Past Historical Flash Card Series — Card #19



Mooresville M. E. Church—Built in 1839

The M.E. Church was originally located on West Washington St. (at Old Cemetery). Built in 1839, it was home to the church until 1882.