



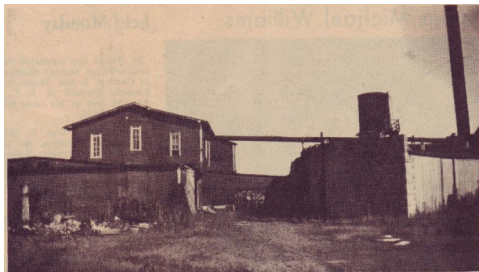
**Fall Creek Furniture Company, Old State Road 67 & Bridge Street,
 Mooresville, Indiana (ca. 1901-1930)**

Fall Creek Furniture Company (circa 1901-1930) at one time employed 500 people, many of whom took the interurban railway from Indianapolis (or surrounding communities) to work at the factory, which was located along old state road 67 near Bridge Street in Mooresville, Indiana. This was later the site of Automotive Armature (1944-1993), which also operated at the former nearby site of the Indiana Brass & Iron Bed Factory (1901-1916).



Published by Mooresville Public Library
220 West Harrison Street
Mooresville, IN 46158
www.mooresvillelib.org

Flash From Your Past Card Historical Flash Card Series — Card #32



Fall Creek Furniture Company (photo before 1930) (photo supplied by Mrs. Kenneth Fields). See our [online handout](#) for more details.