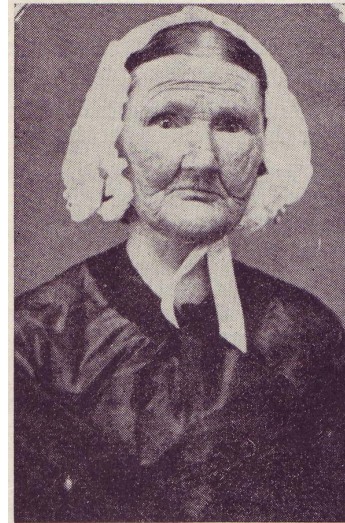


Samuel Moore, Founder of Mooresville



MRS. ELIZA WORTHINGTON  
MOORE  
Founder of Mooresville Methodist  
Church

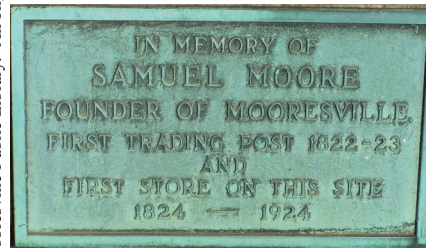
**Samuel Moore (1799-1889) & Eliza Moore (1803-1873)**

Samuel Moore moved from North Carolina to Indiana in 1818 (Washington County, near Salem) and relocated to Morgan County in 1822. In 1824 he purchased 160 acres of land and platted the town of Mooresville. Samuel and Eliza Worthington married on April 15, 1828. Samuel operated a general store, farm, and other business ventures throughout his life. Eliza founded the Methodist Episcopal (M.E.) Church in Mooresville in 1839.



Published by Mooresville Public Library  
220 West Harrison Street  
Mooresville, IN 46158  
[www.mooresvillelib.org](http://www.mooresvillelib.org)

**FLASH FROM YOUR  
PAST  
Historical Flash Card  
Series — Card #21**



In 1824 Samuel Moore opened his general store at the Northeast corner of Main & Indiana Sts. in downtown Mooresville, where Hadley Mini-Park stands today.