

MOORESVILLE PUBLIC LIBRARY
220 West Harrison Street
Mooreville, IN 46158
www.moorevillelib.org
(317) 831-7323
(317) 831-7383 Fax



Mooreville's Treasure Trove #7 (July 2009)

Bill Buckley, Indiana Room Librarian

Historical Mooreville, IN Scenes and Places



Main Street, looking east across the Indiana Street Intersection (1880s/1890s)
(1) North Side [LEFT]: I.O.O.F. Building (near left); (2) South Side [RIGHT]:
G.W. Bass Drugstore (near right); A.W. Conduitt Co. next to Bass Drugstore
(east); L.C. Smith Restaurant and Masonic Hall across alley from Bass
Drugstore. (Photo by J. P. Calvert)



Main Street looking east from the Intersection with Indiana Street (*circa* 1902). (1) North Side [LEFT]: Pace Thompson (man in tie & hat) stands outside his dry goods store; Hundley Bargain Store is the second building from the end, which was torn down in 1966 and replaced by a parking lot; further east is the Post Office and Rusie Furniture Store and Undertaking. (2) South Side [RIGHT] (from closest structure, going eastward): G.W. Bass Drugstore; Burch Grocery; George Keller's Hardware Store; G.R. Scruggs Dry Goods Store. (Photographer Unknown)



North Side of East Main Street, *between* 1909 (when Sam Wade built the brick post office, third building from left) and 1917 (when Sam Wade built another brick building at 24 E. Main St., which housed his plumbing business) (Photo by J. P. Calvert). Since the 1917 Wade building is absent in this photo, the "29" beneath the name on the right cannot be the year the photo was taken.



(ABOVE) Main Street, looking west from Main St/Indiana St. intersection (1910), during the 1910 Horse Show. Farmers State Bank (right), Lindley Block (left). (BELOW) South Indiana Street from Main Street intersection (*circa* 1915) (Photos by J.P. Calvert)





(ABOVE) North Indiana Street from Main Street intersection (1912). (BELOW) View from Washington Street looking south on North Indiana Street (circa 1910) (Photos by J. P. Calvert)





(ABOVE) Aerial view of Harrison Street, looking west [taken from Methodist Episcopal (M.E.) Church steeple, *circa* 1910]. Interurban railway tracks ran along Harrison Street to the railway's (and the town's) electric power station and car storage barns. The Christian Church steeple is visible just above the center (before the power plant chimneys). Mooresville Public Library is now located where the street ends in the picture (on the north side). (BELOW) East Main Street (early 1900s)(Photos by J. P. Calvert)





(ABOVE) Aerial view of Mooresville, looking northeast from M.E. Church steeple, circa late 1880s/early 1890s. (Photo by J. P. Calvert) (BELOW) Main Street Looking West From Indiana Street Intersection (early 1900s) (photographer unknown).





Aerial view of Mooresville, looking southeast [ABOVE] & southwest [BELOW] at Harrison Street from M.E. Church Steeple (1920) (Photos by Manley Brown)





Aerial view of Mooresville, looking north [ABOVE] and south [BELOW] at Indiana Street from M.E. Church Steeple (1920) (Photos by Manley Brown)





Washington Street, one-half block east of Indiana Street, 1912. The Methodist Protestant Church, built in 1896, appears on the left but is no longer there. John and Mary Fogleman's house, visible at far right, still stands today. (Photo by J. P. Calvert)



North Indiana Street at Morgan Street and beyond (early 1900s). (Photo by J. P. Calvert)



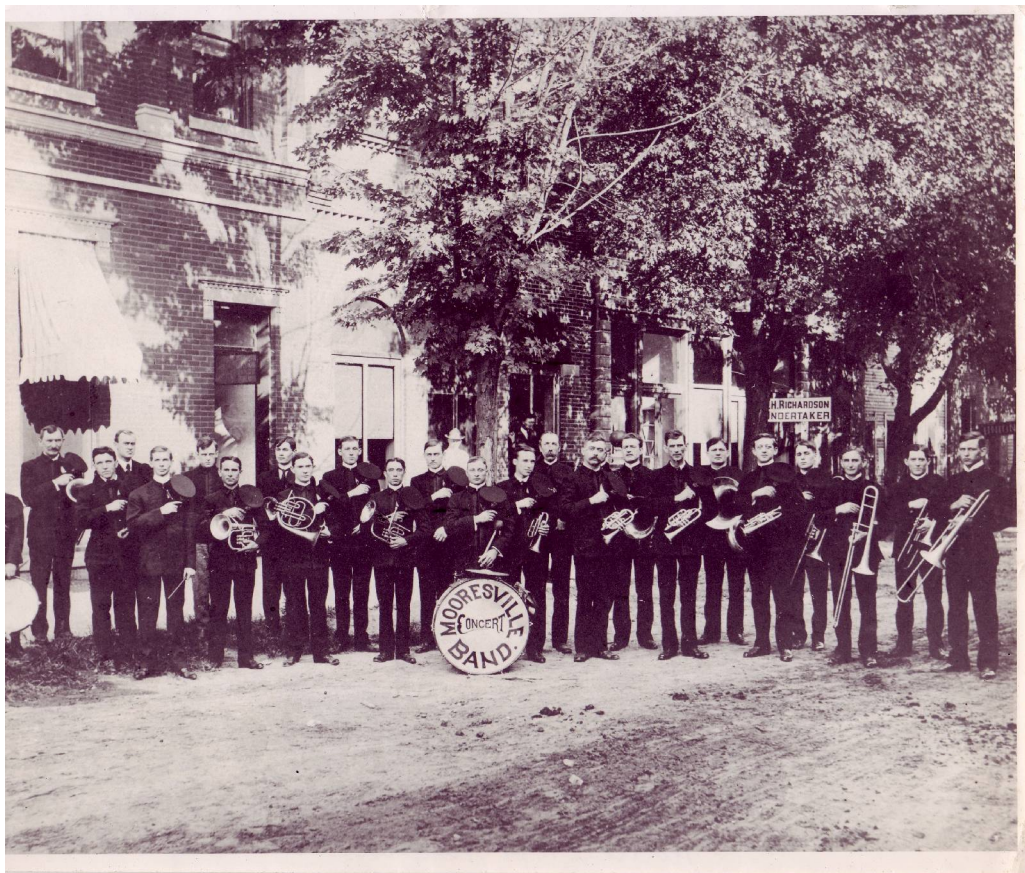
South Indiana Street at Village Shopping Center, looking south [ABOVE] and east [BELOW] (5/19/1973). (Photos by R. Squires).





Moon's Mill—Built in 1823

Moon's Mill (circa 1900), along the White Lick Creek, near present day Kroger grocery and Gray Brothers restaurant. (Photo by J. P. Calvert)



Mooresville Band (circa 1900). This turn-of-the-20th-century photograph shows the Band standing on North Indiana Street, immediately north of the Main Street intersection in downtown Mooresville (among various “calling cards” left by horses on the street). Players included various prominent Mooresville citizens, including

Alf Elliot, Fred Cooper, Earl Fields, Robert Nelson, Walter Thompson, Clint Burge, Otis Burke and Ben Cooper. Also identified on the photo is an “F. Stout,” a “Mr. Pidgeon,” and a man whose surname was Dolen. Unfortunately, the photo identification did not specify which gentlemen belonged to these names. (Photo by George B. Carter)

All photographs reprinted courtesy of the Mooresville Public Library, Indiana Room historical photograph collection.

© 2009 by the Mooresville Public Library. All Rights Reserved. Photographs reprinted by permission.

Last revised on 7/25/2009 by wrb.