

**MOORESVILLE PUBLIC LIBRARY**  
220 West Harrison Street  
Mooresville, IN 46158  
*www.mooresvillelib.org*  
(317) 831-7323  
(317) 831-7383 Fax



*Mooresville's Treasure Trove #5 (April 2008)*

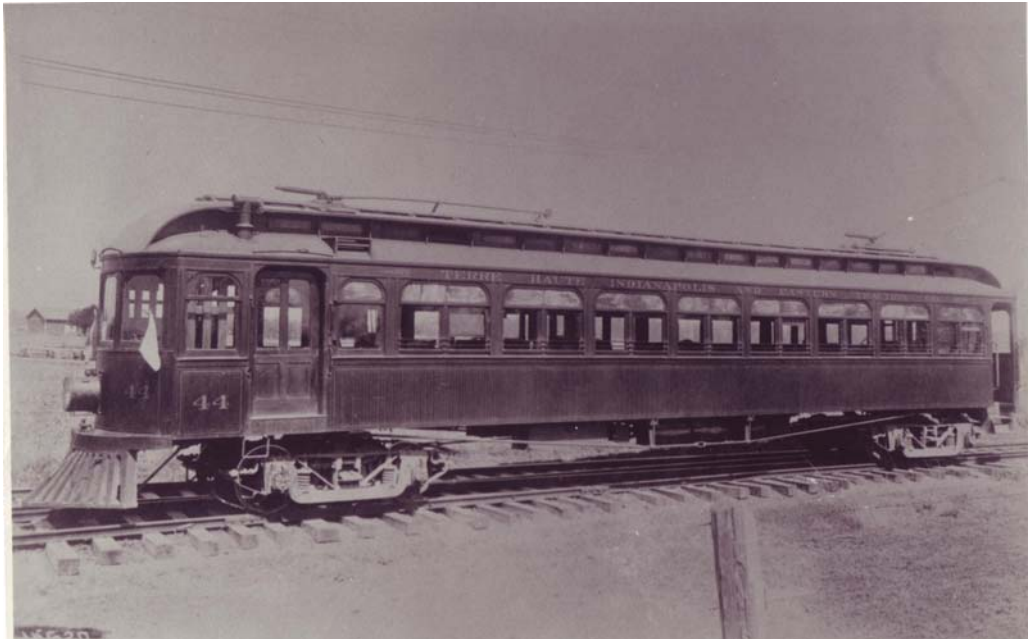
*Bill Buckley, Indiana Room Librarian*

## **The Interurban Railway**

The interurban railway system regularly served Mooresville from 1902 to 1930, traveling the 30.33 miles between Indianapolis and Martinsville. Individual electric railway cars would make up to 15 daily roundtrips. There were 27 stops and 11 stations between Martinsville and Indianapolis. Mooresville's station, located on East Harrison Street, was a small, yellowish-tan structure converted from Earl Marine's great-grandfather's house.

Commuters enjoyed traveling the interurban railway to work or school, or to shop or attend social events. The electric trains were quiet, smooth-riding, and fast. The trains reached speeds up to 60 MPH—faster than automobile traffic of the time.

Between 1902 and 1911 the Indianapolis & Martinsville Rapid Transit Company owned the line and powerhouse once situated at the west end of Harrison Street, where Miller's Merry Manor is currently located. This became known as the Martinsville T.H.I.&E. (Terre Haute, Indianapolis & Eastern) Traction Company "trolley line." Investors came and went over its lifetime, but the quality and dependability of the service never wavered. The T.H.I.&E. interurban made its final run on October 30, 1931.



**Photo Caption:** Car 44 of the T.H.I.&E. Traction Co. Interurban Railway carried 50-64 passengers. The engine's four motors could reach speeds up to 60 MPH, but it could stop relatively quickly with its eight sets of automatic air brakes (one set per wheel). *Courtesy of the Mooresville Public Library, Indiana Room Photograph Collection (Donated by Rebecca Hardin).*

**© 2008 by the Mooresville Public Library. All Rights Reserved. Photographs reprinted by permission.**

Last revised on 4/30/2008 by wrb.