



(ABOVE) Main Street, looking west from Main St./Indiana St. intersection (1910), during the 1910 Horse Show. Farmers State Bank (right), Lindley Block (left). (BELOW) South Indiana Street from Main Street intersection (*circa* 1915) (Photos by J.P. Calvert)





(ABOVE) North Indiana Street from Main Street intersection (1912). (BELOW) View from Washington Street looking south on North Indiana Street (circa 1910) (Photos by J. P. Calvert)





(ABOVE) Aerial view of Harrison Street, looking west [taken from Methodist Episcopal (M.E.) Church steeple, *circa* 1910]. Interurban railway tracks ran along Harrison Street to the railway's (and the town's) electric power station and car storage barns. The Christian Church steeple is visible just above the center (before the power plant chimneys). Mooresville Public Library is now located where the street ends in the picture (on the north side). (BELOW) East Main Street (early 1900s)(Photos by J. P. Calvert)





(ABOVE) Aerial view of Mooresville, looking northeast from M.E. Church steeple, *circa* late 1880s/early 1890s. (Photo by J. P. Calvert) (BELOW) Main Street Looking West From Indiana Street Intersection (early 1900s) (photographer unknown).





Aerial view of Mooresville, looking southeast [ABOVE] & southwest [BELOW] at Harrison Street from M.E. Church Steeple (1920) (Photos by Manley Brown)





Aerial view of Mooresville, looking north [ABOVE] and south [BELOW] at Indiana Street from M.E. Church Steeple (1920) (Photos by Manley Brown)





Washington Street, one-half block east of Indiana Street, 1912. The Methodist Protestant Church, built in 1896, appears on the left but is no longer there. John and Mary Fogleman's house, visible at far right, still stands today. (Photo by J. P. Calvert)



North Indiana Street at Morgan Street and beyond (early 1900s). (Photo by J. P. Calvert)



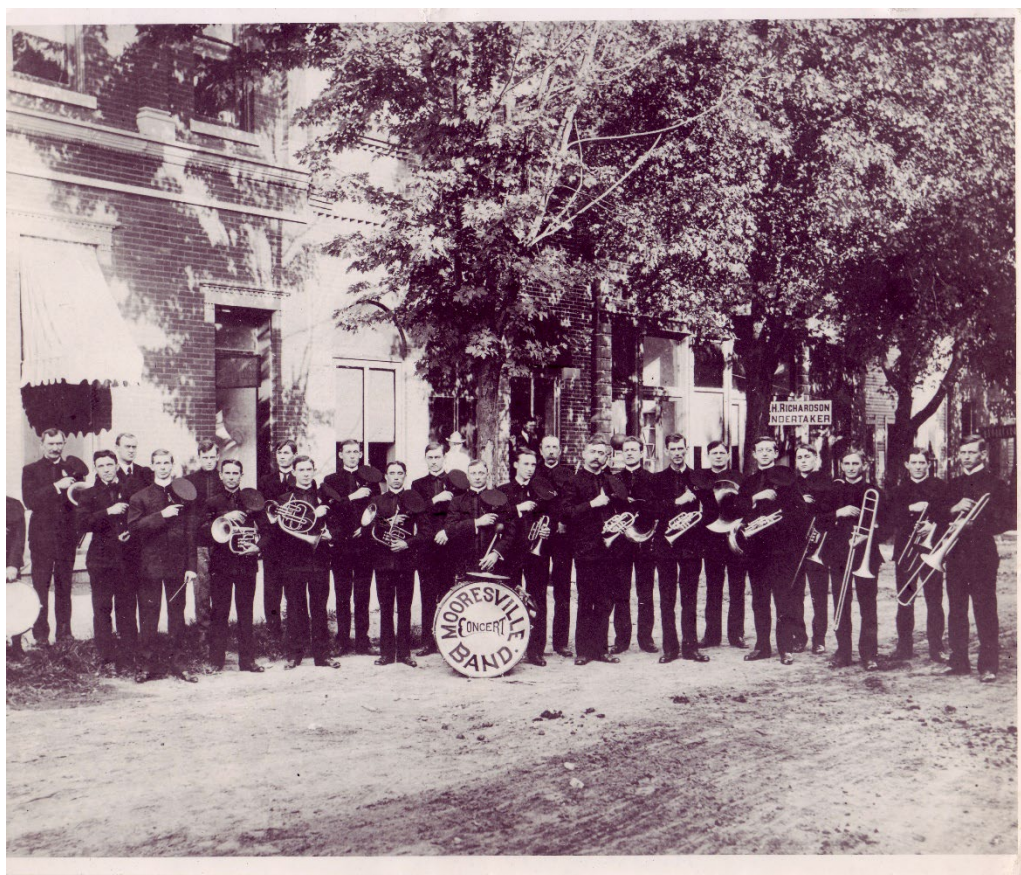
South Indiana Street at Village Shopping Center, looking south [ABOVE] and east [BELOW] (5/19/1973). (Photos by R. Squires).





Moon's Mill—Built in 1823

Moon's Mill (*circa 1900*), along the White Lick Creek, near present day Kroger grocery and Gray Brothers restaurant. (Photo by J. P. Calvert)



Mooresville Band (*circa 1900*). This turn-of-the-20th-century photograph shows the Band standing on North Indiana Street, immediately north of the Main Street intersection in downtown Mooresville (among various “calling cards” left by horses on the street). Players included various prominent Mooresville citizens, including Alf Elliot, Fred

Cooper, Earl Fields, Robert Nelson, Walter Thompson, Clint Burge, Otis Burke and Ben Cooper. Also identified on the photo is an "F. Stout," a "Mr. Pidgeon," and a man whose surname was Dolen. Unfortunately, the photo identification did not specify which gentlemen belonged to these names. (Photo by George B. Carter)

Then... Site of Samuel Moore's Store (est. 1822-23),

I.O.O.F. Building (1880s), Mills Dry Goods Store (early 1900s)



Later... Paul Hadley Mini-Park (Oct. 2007)



Then... West Main Street – Farmers State Bank (early 1900s)



Later... 2 West Main Street (October 2007)



Then... Scruggs Dry Goods Store (c. 1889)

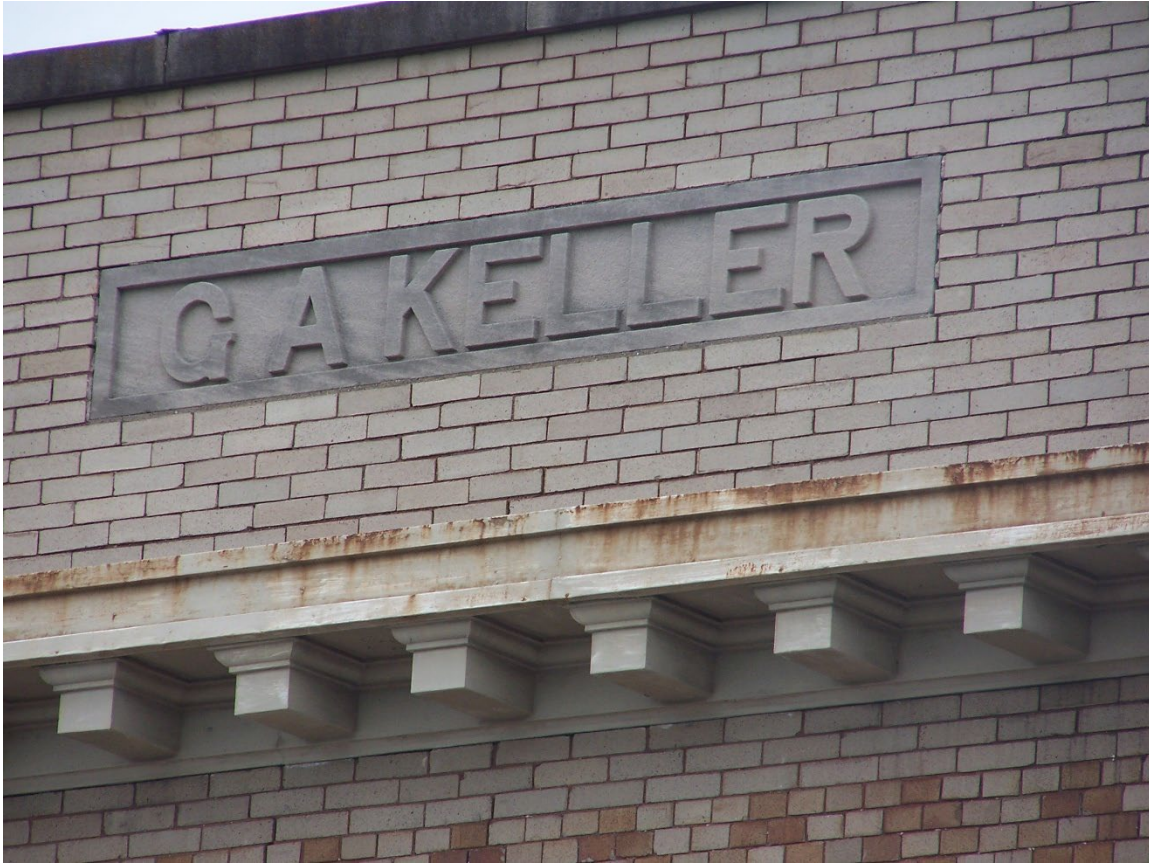


Then... (L to R) Scruggs Dry Goods, G.A. Keller Hardware, Burch Grocery & Bass Drugs (1908)



Later... Southside of East Main Street (May 2008)





G. A. Keller Building, 5 E. Main St. (constructed between 1902-1910) — see p. 9



Carlisle & Gilbert Building (constructed 1895)

9 W. Main St. (Photos, May 2008) — see p. 14

Southside of East Main Street



Then... North Side of East Main Street, *circa* 1915



Later... North Side of East Main Street (October 2007)



North Side of East Main Street (October 2007)

